

PowerGlide®

BOOK OF CUES 2025



PowerGlide®

THIS POWERGLIDE RANGE IS THE MOST EXCITING YET!

INTRODUCING:

- CARBON COMPOSITE REINFORCED, SHOCK RESISTANT SNOOKER CUES
- AEROSPACE GRADE CARBON FIBRE
- MULTI LAYER LACQUER FOR A SUPREME FINISH AND IN HAND FEEL
- STAINLESS STEEL PRECISION ENGINEERED RADIAL PIN JOINT FOR EXCELLENT POWER TRANSFER AND FEEL
- TECHNOLOGICALLY ADVANCED MATERIALS
- IMPROVED SPECIFICATIONS
- POWERGLIDE QUALITY AND ATTENTION TO DETAIL

WE ARE VERY PROUD TO WELCOME YOU TO THE NEW 2024 POWERGLIDE COLLECTION.

ONE PIECE, TWO PIECE OR 3/4 JOINTED

A select range of PowerGlide cues are available in one piece, two piece or 3/4 jointed. One piece cues give best feel on the shot, two piece cues are split into two equal halves for ease of carrying. The 3/4 jointed cues move the joint towards the butt out of the player's line of sight.

NEW SVARTUR CASES

- Svartur premium constructed cue case protects your cue and accessories in outstanding style!
- Strong soft touch EVA is used to maintain rigidity and give outside protection to your snooker or pool cue
- The case can accommodate multiple accessories such as cue towel, tip shaping tool, Spare tips, extensions, and chalks (accessories not included)
- Inside there is a high quality soft feel interior with foam cue separator, hook and elastic loop straps to ensure your cue is stowed safely and securely
- Adjustable and removable shoulder strap for convenient hands-free transportation complements the rubberised carry handle

1 PIECE

2 PIECE

3/4 JOINTED



PowerGlide®

SNOOKER RANGE FEATURES

GRAPHITE RANGE

- 3K Carbon and Composite Reinforced Shaft and Butt
- 3K Aerospace grade Carbon Fibre has higher elongation giving strength and stiffness
- Shock dampening 3M Foam to butt for reduced vibration
- Matt EasyGlide shaft finish. Multilayer lacquer for a supreme finish
- Stainless steel precision engineered radial pin joint for excellent power transfer
- Stainless steel ferrule
- High grade monolayer 10mm natural leather tip for control, feel and spin
- Protective and ergonomically designed rubber buffer avoids damage
- Discreet PowerGlide logo
- Metallic detailing and highlights
- 57"
- Assorted weights 18oz, 19oz

CARBON RANGE

- Carbon and Composite Reinforced Shaft and Butt, open weave to butt
- Aerospace grade Carbon Fibre has higher elongation giving strength and stiffness
- Shock dampening 3M Foam to butt for reduced vibration
- Matt EasyGlide shaft finish. Multilayer lacquer for a supreme finish
- Stainless steel precision engineered quick release pin joint for excellent power transfer
- Stainless steel ferrule
- High grade monolayer 10mm natural leather tip for control, feel and spin
- Protective and ergonomically designed rubber buffer avoids damage
- Discreet PowerGlide logo
- Metallic detailing and highlights
- 57"
- Assorted weights 18oz, 19oz

FIBREGLASS RANGE

- Fibreglass and composite reinforced shaft and butt
- Ultra smooth high gloss multi layered paint and lacquer finish
- Matt EasyGlide shaft finish
- Shock dampening 3M Foam to butt for reduced vibration
- Stainless steel ferrule and precision engineered quick release joint for excellent power transfer
- High grade monolayer 10mm natural leather tip for control, feel and spin
- Protective and ergonomically designed rubber buffer avoids damage
- Discreet PowerGlide logo
- 57"
- Assorted weights 18oz, 19oz

TOURNAMENT RANGE

- The latest technology and manufacturing techniques
- These are combined with traditional cue making skills
- Selected enhanced grain Ash shafts
- Machine spliced joints
- Attractive hand-finished veneers
- Quality Rosewood butts
- The range includes 2 piece and 3/4 jointed options

CLASSIC RANGE

- Eye-catching designs and striking cosmetics
- PowerGlide quality and attention to detail
- A selection of Ash, Hardwood and Composite shafts
- 2 piece and 1-piece options (including shorter cues for club/recreational use)

PowerGlide Snooker cues are available in Graphite, Carbon, Fibreglass, Tournament and Classic ranges. Some of the descriptions of a cue may not fit within the overall range description, where this occurs, the description of the cue in the information text will highlight any deviation from the overall range description.

ARAMID 1.0™

Graphite and composite reinforced shaft and butt

Matt EasyGlide shaft finish

Stainless steel precision engineered thread joint for excellent power transfer and feel

Stainless steel ferrule

10mm tip

Rubber bumper

Length 57"

Assorted weights 18oz, 19oz

2 PIECE CUE

59057



Stainless steel joint



Stainless steel precision engineered thread joint



High grade monolayer
10mm natural
leather tip



ARAMID 2.0™

Graphite and composite reinforced shaft and butt

Matt EasyGlide shaft finish

Stainless steel precision engineered thread joint for excellent power transfer and feel

Stainless steel ferrule

10mm tip

Rubber bumper

Length 57"

Assorted weights 18oz, 19oz

2 PIECE CUE

59058



Stainless steel joint



Stainless steel precision engineered thread joint



High grade monolayer
10mm natural
leather tip



ARAMID 3.0™

Graphite and composite reinforced shaft and butt

Matt EasyGlide shaft finish

Stainless steel precision engineered thread joint for excellent power transfer and feel

Stainless steel ferrule

10mm tip

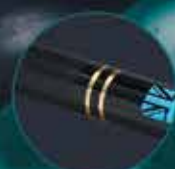
Rubber bumper

Length 57"

Assorted weights 18oz, 19oz

2 PIECE CUE

59056



Stainless steel joint



Stainless steel precision engineered thread joint



High grade monolayer
10mm natural
leather tip



ARAMID 4.0™

Graphite and composite reinforced shaft and butt

Matt EasyGlide shaft finish

Stainless steel precision engineered thread joint for excellent power transfer and feel

Stainless steel ferrule

10mm tip

Rubber bumper

Length 57"

Assorted weights 18oz, 19oz

2 PIECE CUE

59063



Stainless steel joint



Stainless steel precision engineered thread joint



High grade monolayer
10mm natural
leather tip



IGNIS™ ORANGE

Carbon and Composite Reinforced Shaft and Butt

Matt EasyGlide shaft finish

Stainless steel precision engineered quick release pin joint

Stainless steel ferrule

High grade monolayer 10mm natural leather tip

Rubber bumper

Length 57"

Assorted weights 18oz, 19oz

2 PIECE CUE

59053

IGNIS™ PURPLE

Carbon and Composite Reinforced Shaft and Butt

Matt EasyGlide shaft finish

Stainless steel precision engineered quick release pin joint

Stainless steel ferrule

High grade monolayer 10mm natural leather tip

Rubber bumper

Length 57"

Assorted weights 18oz, 19oz

2 PIECE CUE

59054

IGNIS™ BLACK

Carbon and Composite Reinforced Shaft and Butt

Matt EasyGlide shaft finish

Stainless steel precision engineered quick release pin joint

Stainless steel ferrule

High grade monolayer 10mm natural leather tip

Rubber bumper

Length 57"

Assorted weights 18oz, 19oz

2 PIECE CUE

59055



Stainless steel joint



Stainless steel precision engineered quick release joint



High grade monolayer 10mm natural leather tip



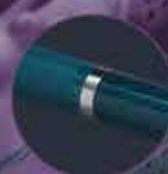
Stainless steel joint



Stainless steel precision engineered quick release joint



High grade monolayer 10mm natural leather tip



Stainless steel joint



Stainless steel precision engineered quick release joint



High grade monolayer 10mm natural leather tip

ESTRELLA™

Fibreglass and Composite Reinforced Shaft and Butt

Ultra smooth high gloss multi layered paint and lacquer finish

Stainless steel quick release joint

Stainless steel ferrule

10mm tip

Rubber bumper

Length 57"

Assorted weights 18oz, 19oz

2 PIECE CUE

59066



Stainless steel joint



Stainless steel precision engineered quick release joint



High grade monolayer
10mm natural
leather tip



NOIR™

Fibreglass and Composite Reinforced Shaft and Butt

Ultra smooth high gloss multi layered paint and lacquer finish

Stainless steel quick release joint

Stainless steel ferrule

10mm tip

Rubber bumper

Length 57"

Assorted weights 18oz, 19oz

2 PIECE CUE

59071



Stainless steel joint



Stainless steel precision engineered quick release joint



High grade monolayer
10mm natural
leather tip



The Tournament range incorporates the latest technology and manufacturing techniques, combined with traditional cue making skills, and uses selected enhanced grain Ash shafts, Rosewood butts, attractive hand-finished veneers and matched grain joints. **The range includes 2 piece and 3/4 jointed options.**

EXECUTIVE™

Hand splice Rosewood butt mahogany front splice with natural veneers

2 piece or 3/4 jointed cue with barometer brass joint

Matching grains at joint on 2 piece cue

9.5mm tip with brass ferrule

6" mini butt extension

Leather bumper

Length 57"

2 PIECE CUE

5224117 L 17oz
5224119 H 19oz

3/4 JOINTED CUE

5224017 L 17oz
5224018 M 18oz
5224019 H 19oz

(Please specify weight when ordering)



Barometric brass joint



Brass precision engineered barometer joint



9.5mm natural leather tip

INCLUDES
6" MINI
EXTENSION



PRISM™

Machine-spliced Rosewood butt Rosewood front splice & coloured wood veneers

2 piece with matched grains at joint

9.5mm tip and brass ferrule

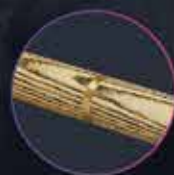
Leather bumper

Length 57"

Assorted weights

2 PIECE CUE

52087



Brass joint



Brass precision engineered thread joint



9.5mm natural leather tip



CATALYST™

Machine-spliced Rosewood butt with a hand-spliced Ash front splice & blue veneers

2 piece with matched grains at joint

9.5mm tip and brass ferrule

Leather bumper

Length 57"

Assorted weights

2 PIECE CUE

59126



Brass joint



Brass precision engineered thread joint



9.5mm natural leather tip



The Classic range features eye-catching designs, striking cosmetics and a selection of Ash, Composite & Hardwood shafts allied to PowerGlide's proven quality and attention to detail.

CALIBRE™

Ash shaft with decal Hardwood butt
2 piece with brass joint
10mm tip with brass ferrule
Leather bumper
Length 57"
Assorted weights

2 PIECE CUE

59108



Brass joint



Brass precision
engineered thread joint



10mm natural
leather tip



ECLIPSE™

Ash shaft with decal hardwood butt
2 piece with brass joint
10mm tip with brass ferrule
Leather bumper
Length 57"
Assorted weights

2 PIECE CUE

59106



Brass joint



Brass precision
engineered thread joint



10mm natural
leather tip



The Classic range features eye-catching designs, striking cosmetics and a selection of Ash, Composite & Hardwood shafts allied to PowerGlide's proven quality and attention to detail.

VIBE™

Ash shaft with decal hardwood butt
2 piece with brass joint
10mm tip with brass ferrule
Leather bumper
Length 57"
Assorted weights

2 PIECE CUE

59107



Brass joint



Brass precision
engineered thread joint



10mm natural
leather tip

MAKO™

NEW
2025

Ash shaft with decal hardwood butt
2 piece with brass joint
10mm tip with brass ferrule
Leather bumper
Length 57"
Assorted weights

2 PIECE CUE

59121



Brass joint



Brass precision
engineered thread joint



10mm natural
leather tip

The Classic range features eye-catching designs, striking cosmetics and a selection of Ash, Composite & Hardwood shafts allied to PowerGlide's proven quality and attention to detail.

AERO™

Ash shaft with painted Hardwood butt, Rosewood splice & coloured veneers

2 piece or 3/4 jointed cue with 'quick release' joint

9.5mm tip with brass ferrule

Leather bumper

Length 57"

Assorted weights

2 PIECE CUE

59086

3/4 JOINTED CUE

5908634

2 PIECE

3/4 JOINTED

TARGET™

Ash shaft with painted Hardwood butt & hardwood splice with coloured veneers

2 piece or 3/4 jointed cue with 'quick release' joint

9.5mm tip and brass ferrule

Leather bumper

Length 57"

Assorted weights

2 PIECE CUE

59085

3/4 JOINTED CUE

5908534

2 PIECE

3/4 JOINTED



Brass joint



Brass precision engineered thread joint



9.5mm natural leather tip



Brass joint



Brass precision engineered thread joint



9.5mm natural leather tip



The Classic range features eye-catching designs, striking cosmetics and a selection of Ash, Composite & Hardwood shafts allied to PowerGlide's proven quality and attention to detail.

ORIGINAL™ 2 PIECE BLACK

Poplar shaft with painted
Hardwood butt

2 piece with brass joint

10mm tip and brass ferrule

Rubber bumper

Length 57"

Assorted weights

2 PIECE CUE

52000

ORIGINAL™ 2 PIECE BLUE

Poplar shaft with painted
Hardwood butt

2 piece with brass joint

10mm tip and brass ferrule

Rubber bumper

Length 57"

Assorted weights

2 PIECE CUE

52000BLUE

ORIGINAL™ 2 PIECE RED

Poplar shaft with painted
Hardwood butt

2 piece with brass joint

10mm tip and brass ferrule

Rubber bumper

Length 57"

Assorted weights

2 PIECE CUE

52000RED



Brass joint



Brass precision
engineered thread joint



10mm natural
leather tip



Brass joint



Brass precision
engineered thread joint



10mm natural
leather tip



Brass joint



Brass precision
engineered thread joint



10mm natural
leather tip

The Classic range features eye-catching designs, striking cosmetics and a selection of Ash, Composite & Hardwood shafts allied to PowerGlide's proven quality and attention to detail.

ORIGINAL™ 1 PIECE BLACK

Poplar shaft with painted Hardwood butt

Available in 36" 42" 48" 52" & 57" lengths

10mm tip and brass ferrule

Rubber bumper

Assorted weights

1 PIECE CUE

51000	36" Length
51001	42" Length
51002	48" Length
51003	52" Length
51004	57" Length

ORIGINAL™ 1 PIECE BLUE

Poplar shaft with painted Hardwood butt

Available in 36" 42" 48" 52" & 57" lengths

10mm tip and brass ferrule

Rubber bumper

Assorted weights

1 PIECE CUE

51000BLUE	36" Length
51001BLUE	42" Length
51002BLUE	48" Length
51003BLUE1	52" Length
51004BLUE	57" Length

ORIGINAL™ 1 PIECE RED

Poplar shaft with painted Hardwood butt

Available in 36" 42" 48" 52" & 57" lengths

10mm tip and brass ferrule

Rubber bumper

Assorted weights

1 PIECE CUE

51000RED	36" Length
51001RED	42" Length
51002RED	48" Length
51003RED	52" Length
51004RED	57" Length

1 PIECE CUES
AVAILABLE IN
FIVE LENGTHS



Our cue sets offer incorporates our popular cues with sleek cue cases and chalk for a convenient cue set.

TARGET™ CUE SET

Ash shaft with painted Hardwood butt & hardwood splice with coloured veneers

2 piece with brass joint

9.5mm tip and brass ferrule

Leather bumper

Length 57"

Assorted weights

Attache style cue case with flocked foam inlay

2 x green cue chalk

2 PIECE CUE & CASE SET

59089



Chalk Pocket



AERO™ CUE SET

Ash shaft with painted Hardwood butt, Rosewood splice & coloured veneers

2 piece with brass joint

9.5mm tip with brass ferrule

Leather bumper

Length 57"

Assorted weights

Attache style cue case with flocked foam inlay

2 x green cue chalk

2 PIECE CUE & CASE SET

59090



Chalk Pocket



Our cue sets offer incorporates our popular cues with sleek cue cases and chalk for a convenient cue set.

PREMIUM FIBREGLASS CUE AND SVARTUR CASE SET

Fibreglass and Composite Reinforced Shaft and Butt
Ultra smooth high gloss multi layered paint and lacquer finish
Stainless steel quick release joint
Stainless steel ferrule
10mm tip
Rubber bumper
Length 57"
Assorted weights 18oz, 19oz
Premium constructed cue case
Strong soft touch EVA is used to maintain rigidity and give outside protection to your snooker or pool cue
2 x green cue chalk

2 PIECE CUE & CASE SET

59080SET



Includes 2x chalk

CIRCA™ CUE AND SVARTUR CASE SET

Resistant to atmospheric conditions and helps protect against damp, dents & warping
2 piece with brass joint
10mm tip with brass ferrule
Rubber bumper
Length 57"
Assorted weights
Strong soft touch EVA is used to maintain rigidity and give outside protection to your snooker or pool cue
2 x green cue chalk

2 PIECE CUE & CASE SET

59011SET



Includes 2x chalk

Our cue sets offer incorporates our popular cues with sleek cue cases and chalk for a convenient cue set.

PARAMOUNT™ CUE AND SVARTUR CASESET

Hand spliced Ebony butt large front Olivewood and Kingswood splice

3/4 jointed cue with brass 'quick release' joint

9.5mm medium/hard tip with brass ferrule

Butt joint for extension

Leather bumper

Length 57"

Strong soft touch EVA is used to maintain rigidity and give outside protection to your snooker or pool cue.

2 x green cue chalk

3/4 JOINTED CUE AND CASE SET

5901318SET M 18oz



Includes 2x chalk

EXECUTIVE™ CUE AND SVARTUR CASESET

Hand splice Rosewood butt mahogany front splice with natural veneers

2 piece or 3/4 jointed cue with barometer brass joint

Matching grains at joint on 2 piece cue

9.5mm tip with brass ferrule

6" mini butt extension

Leather bumper

Length 57"

Strong soft touch EVA is used to maintain rigidity and give outside protection to your snooker or pool cue.

2 x green cue chalk

2 PIECE CUE AND CASE SET

52241175SET L 17oz



Includes 2x chalk

PowerGlide®

POOL RANGE FEATURES

CARBON RANGE

- Carbon and Composite Reinforced Shaft and Butt
- Shock dampening 3M Foam to butt for reduced vibration
- Matt EasyGlide shaft finish
- Stainless steel precision engineered quick release uni-loc joint
- Stainless steel ferrule
- High grade monolayer 10mm natural leather tip for control, feel and spin
- Protective rubber bumper and Stainless Steel Butt Cap
- Length 57"
- Assorted weights 18oz, 19oz

TOURNAMENT RANGE

- A selection of Maple and hardwood shafts
- Eye-catching decorative decals
- Pool joints
- A range of linen and rubberised grips
- 10mm/13mm tips
- Rubber bumper

CLASSIC RANGE

- A great value range of innovative designs
- Pool joints
- A selection of linen, nylon and rubberised grips
- 10mm/13mm tips
- Rubber bumper

ENGLISH POOL RANGE

This range has been specifically designed to meet the particular requirements of the English playing style and conditions and offers:-

- Selected straight grain enhanced finish Ash shafts
- Selected top grade Rosewood butts
- Precision engineered quick release joints



PowerGlide pool cues are available in Carbon, Tournament, Classic and English pool ranges. Some of the descriptions of a cue may not fit within the overall range description, where this occurs, the description of the cue in the information text will highlight any deviation from the overall range description.

LUXE™

NEW 2025

Carbon and Composite Reinforced Shaft and Butt

Shock dampening 3M Foam

EasyGlide shaft finish with soft textured leather wrap grip

Stainless steel total engineered quick release uni-loc joint

High grade monolayer natural leather tip with carbon fibre ferrule

Protective rubber bumper and Stainless Steel Butt Cap

Length 57"

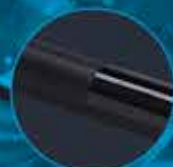
13mm tip version is 58" long with a Super Straight taper

Assorted weights 18oz, 19oz

2 PIECE CUE

59119

59119-13



Pool joint



Stainless steel total engineered quick release uni-loc joint



High grade monolayer natural leather tip with carbon fibre ferrule



High grade monolayer 13mm natural leather tip with carbon fibre ferrule



10MM TIP

13MM TIP

AUTOGRAPH™

NEW 2025

Carbon and Composite Reinforced Shaft and Butt

Shock dampening 3M Foam

EasyGlide shaft finish with soft textured leather wrap grip

Stainless steel total engineered quick release uni-loc joint

High grade monolayer natural leather tip with carbon fibre ferrule

Protective rubber bumper and Stainless Steel Butt Cap

Length 57"

13mm tip version is 58" long with a Super Straight taper

Assorted weights 18oz, 19oz

2 PIECE CUE

59120

59120-13



Pool joint



Stainless steel total engineered quick release uni-loc joint



High grade monolayer natural leather tip with carbon fibre ferrule



High grade monolayer 13mm natural leather tip with carbon fibre ferrule



10MM TIP

13MM TIP

VERVE™ BLACK

NEW
2025

Carbon composite shaft wrapped in real Maple laminate

Carbon composite butt with EasyGlide finish

Shock dampening 3M foam

EasyGlide shaft finish

Stainless steel total engineered quick release uni-loc joint

High grade monolayer natural leather tip with Stainless steel ferrule

Protective rubber bumper and Stainless Steel Butt Cap

Length 57"

Assorted weights 18oz, 19oz

2 PIECE CUE

59072



Pool joint



Stainless steel total engineered quick release uni-loc joint



10mm natural leather tip with Stainless steel ferrule

VERVE™ SILVER

NEW
2025

Carbon composite shaft wrapped in real Maple laminate

Carbon composite butt with EasyGlide finish

Shock dampening 3M foam

EasyGlide shaft finish

Stainless steel total engineered quick release uni-loc joint

High grade monolayer natural leather tip with Stainless steel ferrule

Protective rubber bumper and Stainless Steel Butt Cap

Length 57"

Assorted weights 18oz, 19oz

2 PIECE CUE

59073



Pool joint



Stainless steel total engineered quick release uni-loc joint



10mm natural leather tip with Stainless steel ferrule

VERVE™ RED

NEW
2025

Carbon composite shaft wrapped in real Maple laminate

Carbon composite butt with EasyGlide finish

Shock dampening 3M foam

EasyGlide shaft finish

Stainless steel total engineered quick release uni-loc joint

High grade monolayer natural leather tip with Stainless steel ferrule

Protective rubber bumper and Stainless Steel Butt Cap

Length 57"

Assorted weights 18oz, 19oz

2 PIECE CUE

59074



Pool joint



Stainless steel total engineered quick release uni-loc joint



10mm natural leather tip with Stainless steel ferrule

EMANATE™ BLUE

NEW
2025Carbon and Composite Reinforced
Shaft and Butt

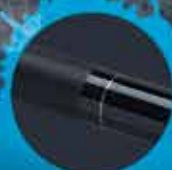
Shock dampening 3M Foam

EasyGlide shaft finish with matt
soft feel wrap gripStainless steel total engineered
quick release uni-loc jointHigh grade monolayer natural
leather tip with carbon fibre ferruleProtective rubber bumper and
Stainless Steel Butt Cap

Length 57"

13mm tip version is 58" long
with a Super Straight taper

2 PIECE CUE

59077
59077-13

Pool joint

Stainless steel total
engineered quick
release jointHigh grade monolayer
10mm natural leather tip
with Stainless steel ferruleHigh grade monolayer
13mm natural leather
tip with fibre ferrule

EMANATE™ GREY

NEW
2025Carbon and Composite Reinforced
Shaft and Butt

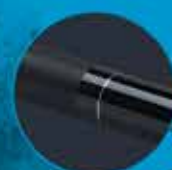
Shock dampening 3M Foam

EasyGlide shaft finish with matt
soft feel wrap gripStainless steel total engineered
quick release uni-loc jointHigh grade monolayer natural
leather tip with carbon fibre ferruleProtective rubber bumper and
Stainless Steel Butt Cap

Length 57"

13mm tip version is 58" long
with a Super Straight taper

2 PIECE CUE

59078
59078-13

Pool joint

Stainless steel total
engineered quick
release jointHigh grade monolayer
10mm natural leather tip
with Stainless steel ferruleHigh grade monolayer
13mm natural leather
tip with fibre ferrule

EMANATE™ RED

NEW
2025

Carbon and Composite Reinforced
Shaft and Butt

Shock dampening 3M Foam

EasyGlide shaft finish with matt
soft feel wrap grip

Stainless steel total engineered
quick release uni-loc joint

High grade monolayer natural
leather tip with carbon fibre ferrule

Protective rubber bumper and
Stainless Steel Butt Cap

Length 57"

13mm tip version is 58" long
with a Super Straight taper

2 PIECE CUE

59124

59124-13



Pool joint



Stainless steel total
engineered quick
release joint



High grade monolayer
10mm natural leather tip
with Stainless steel ferrule



High grade monolayer
13mm natural leather
tip with fibre ferrule



QUANTA™ BLUE

Carbon and composite Reinforced shaft and butt

Shock dampening 3M Foam

Matt EasyGlide shaft finish

Stainless steel precision engineered joint

High grade monolayer 10mm leather tip with Stainless steel ferrule or High grade monolayer 13mm leather tip with fibre ferrule

Matte soft feel wrap to butt, cracked iced design

Protective rubber bumper and Stainless steel butt cap

Length 57"

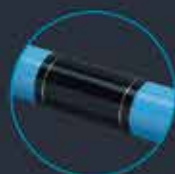
13mm tip version is 58" long with a Super Straight taper

Assorted weights 18oz, 19oz

2 PIECE CUE

59068

59068-13



Pool joint



Stainless steel total engineered quick release joint



High grade monolayer 10mm natural leather tip with Stainless steel ferrule



High grade monolayer 13mm natural leather tip with fibre ferrule



QUANTA™ WHITE

Carbon and composite Reinforced shaft and butt

Shock dampening 3M Foam

Matt EasyGlide shaft finish

Stainless steel precision engineered joint

High grade monolayer 10mm leather tip with Stainless steel ferrule or High grade monolayer 13mm leather tip with fibre ferrule

Matte soft feel wrap to butt, cracked iced design

Protective rubber bumper and Stainless steel butt cap

Length 57"

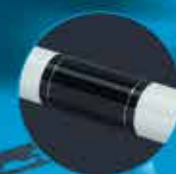
13mm tip version is 58" long with a Super Straight taper

Assorted weights 18oz, 19oz

2 PIECE CUE

59069

59069-13



Pool joint



Stainless steel total engineered quick release joint



High grade monolayer 10mm natural leather tip with Stainless steel ferrule



High grade monolayer 13mm natural leather tip with fibre ferrule



A selection of Maple shafts with eye-catching decorative decals and a range of leather, linen and rubber grips. There are Fibre or Brass ferrules depending upon tip size and all models have pool joints and rubber buffers.

BURNER™

Maple shaft with ramlin butt and decal design

10mm or 13mm standard tip with brass (10mm) or fibre (13mm) ferrule

Pool joint with plastic collar

Rubberised wrap grip

Rubber bumper

Length 57"

Assorted weights

2 PIECE CUE

59091

59091-13

10mm TIP

13mm TIP

BURNER II™

Maple shaft with ramlin butt and decal design

10mm or 13mm standard tip with brass (10mm) or fibre (13mm) ferrule

Pool joint with plastic collar

Rubberised wrap grip

Rubber bumper

Length 57"

Assorted weights

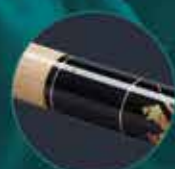
2 PIECE CUE

59110

59110-13

10mm TIP

13mm TIP



Pool joint



Stainless steel precision engineered radial pin joint



10mm Brass or 13mm fibre ferrule



Pool joint



Stainless steel precision engineered radial pin joint



10mm Brass or 13mm fibre ferrule

A great value range of innovative designs with a selection of linen or rubberised grips, pool joints and rubber buffers.

PSYCHEDELIC™

Ramin shaft & butt with decal design

10mm or 13mm standard tip with brass (10mm) or fibre (13mm) ferrule

Pool joint with plastic collar

Rubberised wrap grip

Rubber bumper

Length 57"

Assorted weights

2 PIECE CUE

59109
59109-13

10MM TIP

13MM TIP

SKYLINE™

Ramin shaft & butt with decal design

10mm or 13mm standard tip with brass (10mm) or fibre (13mm) ferrule

Pool joint with plastic collar

Rubberised wrap grip

Rubber bumper

Length 57"

Assorted weights

2 PIECE CUE

59076
59076-13

10MM TIP

13MM TIP



Pool joint



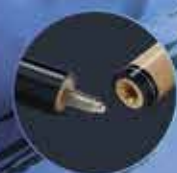
Stainless steel precision engineered radial pin joint



10mm Brass or 13mm fibre ferrule



Pool joint



Stainless steel precision engineered radial pin joint



10mm Brass or 13mm fibre ferrule

A great value range of innovative designs with a selection of linen or rubberised grips, pool joints and rubber buffers.

INVICTA™

Maple shaft with ramin butt and decal design

10mm tip with aluminium ferrule

Pool joint with plastic collar

Linen wrap grip

Rubber bumper

Length 57"

Assorted weights

2 PIECE CUE

59002



Pool joint



Stainless steel precision engineered radial pin joint



10mm tip with aluminium ferrule



The range features enhanced grain Ash shafts, Rosewood butts and 3 piece models. All models have precision engineered joints and leather buffers.

MENTOR™

Machine spliced Rosewood butt with natural veneer

8.5mm tip with brass ferrule

Matching grains at centre joint.

Brass joint

Leather bumper

Length 55"

Assorted weights

3 PIECE CUE

59084



Brass joints



Brass thread joint



8.5mm natural leather tip

LION™

Hardwood butt with coloured veneers

8.5mm tip with brass ferrule

Brass joint

Leather bumper

Length 57"

Assorted weights

3 PIECE CUE

59087



Brass joints



Brass thread joint



8.5mm natural leather tip

PowerGlide Cases are suitable for both Snooker and Pool Cues.
We make cases to fit 2 Piece, 3/4 jointed and 1 Piece Cues.

SVARTUR™ 2 PIECE

Svartur premium constructed cue case protects your cue and accessories in outstanding style! Strong soft touch EVA is used to maintain rigidity and give outside protection to your snooker or pool cue.

SVARTUR BLACK
2 PIECE CUE CASE
59059



The case can accommodate multiple accessories such as cue towel, tip shaping tool, spare tips, extensions, and chalks (accessories not included).

There is a high quality soft feel interior with foam cue separator, hook and elastic loop straps to ensure your cue is stowed safely and securely.

SVARTUR BLUE
2 PIECE CUE CASE
59122



Adjustable and removable shoulder strap for convenient hands-free transportation complements the rubberised carry handle.

(CUES AND ACCESSORIES NOT INCLUDED)

SVARTUR GREY
2 PIECE CUE CASE
59123



PowerGlide Cases are suitable for both Snooker and Pool Cues.
We make cases to fit 2 Piece, $\frac{3}{4}$ jointed and 1 Piece Cues.

SVARTUR™ 2 PIECE

Svartur premium constructed cue case protects your cue and accessories in outstanding style! Strong soft touch EVA is used to maintain rigidity and give outside protection to your snooker or pool cue.

The case can accommodate multiple accessories such as cue towel, tip shaping tool, spare tips, extensions, and chalks (accessories not included).

SVARTUR NOIR
2 PIECE CUE CASE
59070



There is a high quality soft feel interior with foam cue separator, hook and elastic loop straps to ensure your cue is stowed safely and securely.

Adjustable and removable shoulder strap for convenient hands-free transportation complements the rubberised carry handle.

(CUES AND ACCESSORIES NOT INCLUDED)

SVARTUR GRADUATED BLUE
2 PIECE CUE CASE
59075



2 PIECE SKUBA CASE

NEW
2025

Light, durable cue case with inner separator, adjustable and removable shoulder strap

59128



PowerGlide Cases are suitable for both Snooker and Pool Cues.
We make cases to fit 2 Piece, $\frac{3}{4}$ jointed and 1 Piece Cues.

CUE SLEEVE

Ultra-light and ultra slim cue sleeve with padded lining and hook and loop fastener.
57500



SOFT CUE CASE

Hard-wearing 2 piece cue soft case with carry handle.
57515



ATTACHÉ STYLE

Black attaché style 2 piece cue case with padded protective lining.
57507



PowerGlide Cases are suitable for both Snooker and Pool Cues.
We make cases to fit 2 Piece, 3/4 jointed and 1 Piece Cues.

SVARTUR™ 3/4 JOINTED

Svartur premium constructed cue case protects your cue and accessories in outstanding style! Strong soft touch EVA is used to maintain rigidity and give outside protection to your snooker or pool cue.

The case can accommodate multiple accessories such as Cue towel, Tip shaping tool, Spare tips, Extensions, and chalks (accessories not included).

Inside there is a high quality soft feel interior with foam cue separator, hook and elastic loop straps to ensure your cue is stowed safely and securely.

Adjustable and removable shoulder strap for convenient hands-free transportation complements the rubberised carry handle.

(CUES AND ACCESSORIES NOT INCLUDED)

SVARTUR BLACK
3/4 JOINTED CUE CASE
59060

SVARTUR BLUE
3/4 JOINTED CUE CASE
59117

SVARTUR GREY
3/4 JOINTED CUE CASE
59118



PowerGlide Cases are suitable for both Snooker and Pool Cues.
We make cases to fit 2 Piece, 3/4 jointed and 1 Piece Cues.

3/4 SOFT CUE CASE

Hard-wearing 3/4 jointed cue soft case with carry handle
59111



1 PIECE SKUBA SOCK

NEW
2025

1 piece skuba sock - Ultra light and slim cue sock with padded fabric and hook and loop fastening
59127



1 PIECE CUE SLEEVE

Ultra-light and ultra slim cue sleeve with padded lining and hook and loop fastening
59079



PowerGlide Tournament snooker and pool balls are suitable for recreational and general use and available in various sizes for the smallest home table up to full size tables.

SELECT 22 BALL SNOOKER SET

2 1/8" (52.4mm) Boxed
57110SEL



22 BALL SNOOKER SET

2" (51mm) Boxed
57106
2 1/8" (52.4mm) Boxed
57110



17 BALL SNOOKER SET

1 1/2" (37.5mm) Boxed
57100
1 3/4" (44.5mm) Boxed
57101
1 7/8" (47.5mm) Boxed
57102



SELECT SPOTS & STRIPES POOL SET

2 1/4" (57mm) Boxed
57130SEL



SPOTS & STRIPES POOL SET

1 7/8" (47.5mm) Boxed
57122
2" (51mm) Boxed
57126
2 1/4" (57mm) Boxed
57130
2" (51mm) 1 7/8" (47.5mm)
white ball Boxed
59083
(Suitable for coin operated tables)



RED & YELLOW POOL SET

1 7/8" (47.5mm) Boxed
57147
2" (51mm) Boxed
57151
2 1/4" (57mm) Boxed
57155
2" (51mm) 1 7/8" (47.5mm)
white ball Boxed
59082
(Suitable for coin operated tables)



TABLE BRUSH
Nylon bristle
59015



SINGLE CUE BALL
1 7/8" (47.5mm) 57180
2" (51mm) 57181



TRAINING BALL
2 1/4" (57mm) 59008

Our Triangles are suitable for recreational and general use and come in various sizes for the smallest home table up to full size tables.

TRIANGLES

Plastic 1 1/8"	(37.5mm)	10 ball capacity	57162
Plastic 1 1/2"	(37.5mm)	15 ball capacity	57163
Plastic 1 3/4"	(44.5mm)	10 ball capacity	57164
Plastic 1 3/4"	(44.5mm)	15 ball capacity	57165
Plastic 1 7/8"	(47.5mm)	10 ball capacity	57166
Plastic 1 7/8"	(47.5mm)	15 ball capacity	57167
Plastic 2"	(51mm)	15 ball capacity	57168
Plastic 2 1/8"	(52.5mm)	15 ball capacity	57169
Plastic 2 1/4"	(57mm)	15 ball capacity	57170
Wooden 2 1/8"	(52.5mm)	15 ball capacity	57173
Wooden 2 1/4"	(57mm)	15 ball capacity	57174



CUE TIPS



Stick on tips 9mm 57009
Stick on tips 10mm 57010



Screw tips 10mm 57005
Screw tips 11mm 57006

25 BOXED CUE SCREW TIPS

Each box contains 25 Screw tips
10mm 57005-25



We make a range of top-class accessories for Cues and Tables including Accessory Kits which contain everything you need to maintain your cue in top condition.

RESTS AND ACCESSORIES



Brass spider 57020



Brass cross rest 57021



Brass bridge 57022



Nylon spider 57026



Nylon cross rest 57027



Tip glue 57038

6 IN 1 TIP SHAPER

Compact cue tip shaper with six different functions including:

- Scuffer
 - Shaper
 - Aerator
 - Sander
 - Polisher
 - Compactor/tapper
- 59064



RUBBER HANGER

Stylish, branded and versatile in-store display

Displays snooker and pool cues neatly and securely
Compatible with existing Euro Hooks and Slatwall displays
Flexible elastomer rubber securely holds cues from 8.5 to 13mm tip sizes
59010



We make a range of top-class accessories for Cues and Tables including Accessory Kits which contain everything you need to maintain your cue in top condition.

CHALK

Chalk Tube Blue
5700SEL

Chalk Tube Green
5700ISEL

Display Box
Chalk x 24 Green
59034



Chalk Holder
(Pack of 2)
59009

6" MINI EXTENSION

6" Ebony
mini extension
59006



Blue Chalk 57000

Green Chalk 57001

SCREW-IN TELESCOPIC EXTENSIONS

The extension is constructed of aluminium and ABS plastic. The extension measures 11" in length, but can extend the length of the cue any amount between 18" and 30".

59020 18" telescopic extension (screw in)



SEE WEBSITE FOR CUE COMPATIBILITY WWW.POWERGLIDE-CUES.COM

We make a range of top-class accessories for Cues and Tables including Accessory Kits which contain everything you need to maintain your cue in top condition.

DELUXE ACCESSORY WALLET

Deluxe accessory wallet containing;

- 1 piece of chalk
- Magnetic chalk holder
- Tip clamp
- Tip shaper
- Tip trimmer
- Tip glue
- Cue cleaning pad
- Cue ball marker
- 4 cue tips

57052



CUE ACCESSORY KIT

Clam packed accessory kit containing;

- Magnetic chalk holder belt clip
- Cue cleaning pad
- Cue tip trimmer
- Cue clamp and locking ring
- 2 pieces of chalk
- Cue tip glue
- 6 spare tips

57053



MINI ACCESSORY WALLET

This kit is held in a PowerGlide branded faux leather wallet with zip containing;

- 4 x stick on tips
- cue clamp and locking ring
- Tip glue
- Tip shaper
- 2 x cue chalk
- Cue polisher

59102



TOWEL

NEW
2025

Lightweight, high quality
Snooker/Pool towel!

59125



The top quality merchandise described
in this brochure has been designed by
experts to exacting standards.

PowerGlide® reserves the right to make
any alterations in the design, material or
arrangement of these products which in
their view improves them.

The entire contents of this publication
are the copyright of Unicorn Products
Limited and may not be reprinted, copied
or duplicated without the written consent
of the copyright owners.

PowerGlide® is the cue sports brand
of Unicorn Products Limited.

PowerGlide®

Telephone: 0115 985 3500

Fax: 0115 985 3501

Email: assist@unicorngroup.com

Web: www.powerglide-cues.com

All returned goods must be sent to:

GM Operations Centre

Trent Lane, Colwick,

Nottingham NG2 4DS

www.powerglide-cues.com

©2025 Unicorn Products Limited

A UNICORN GROUP COMPANY Catalogue

designed by Chris Wall Creative

www.chriswallcreative.co.uk

PowerGlide®